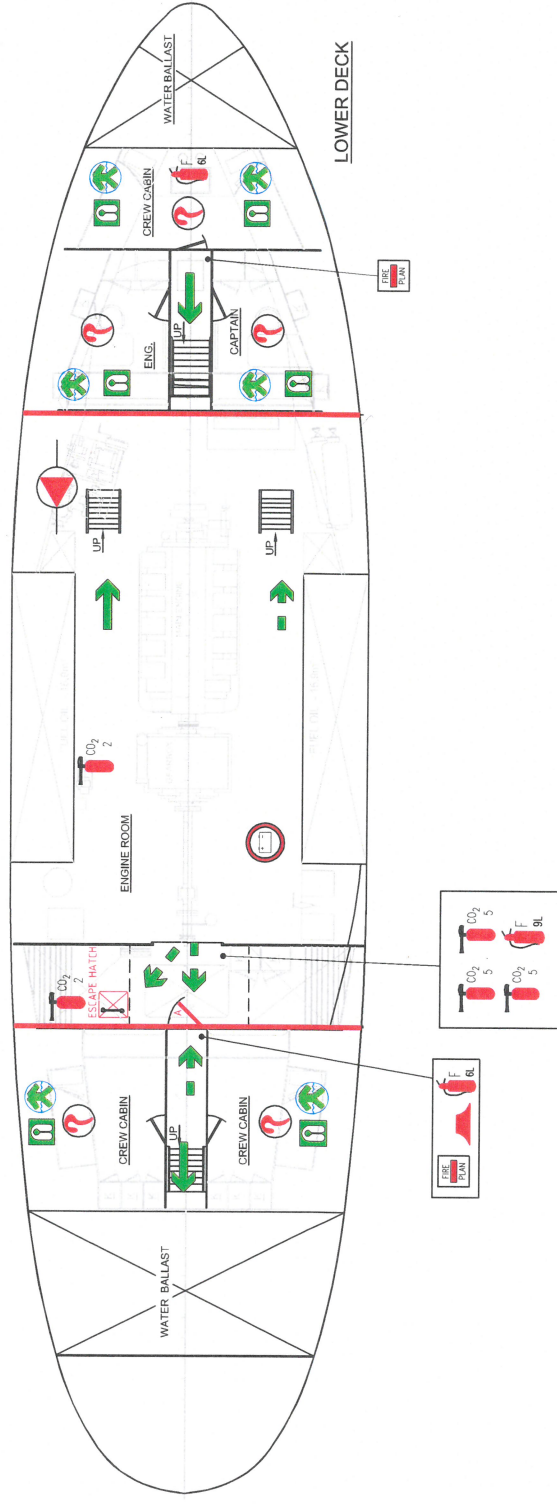
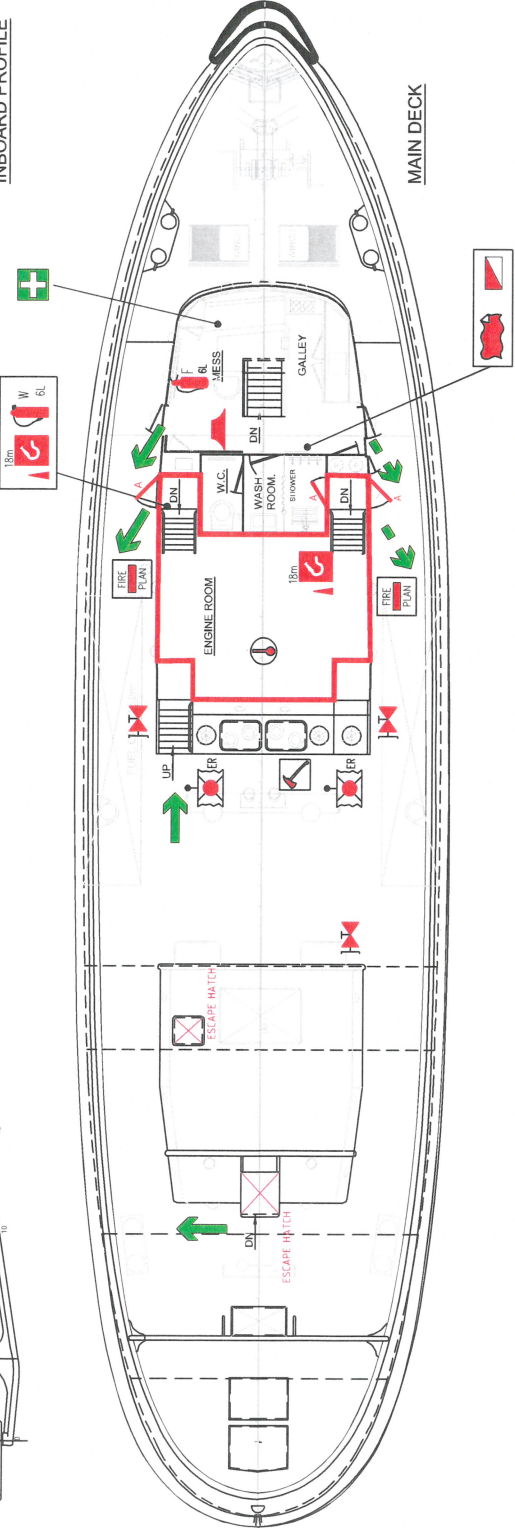
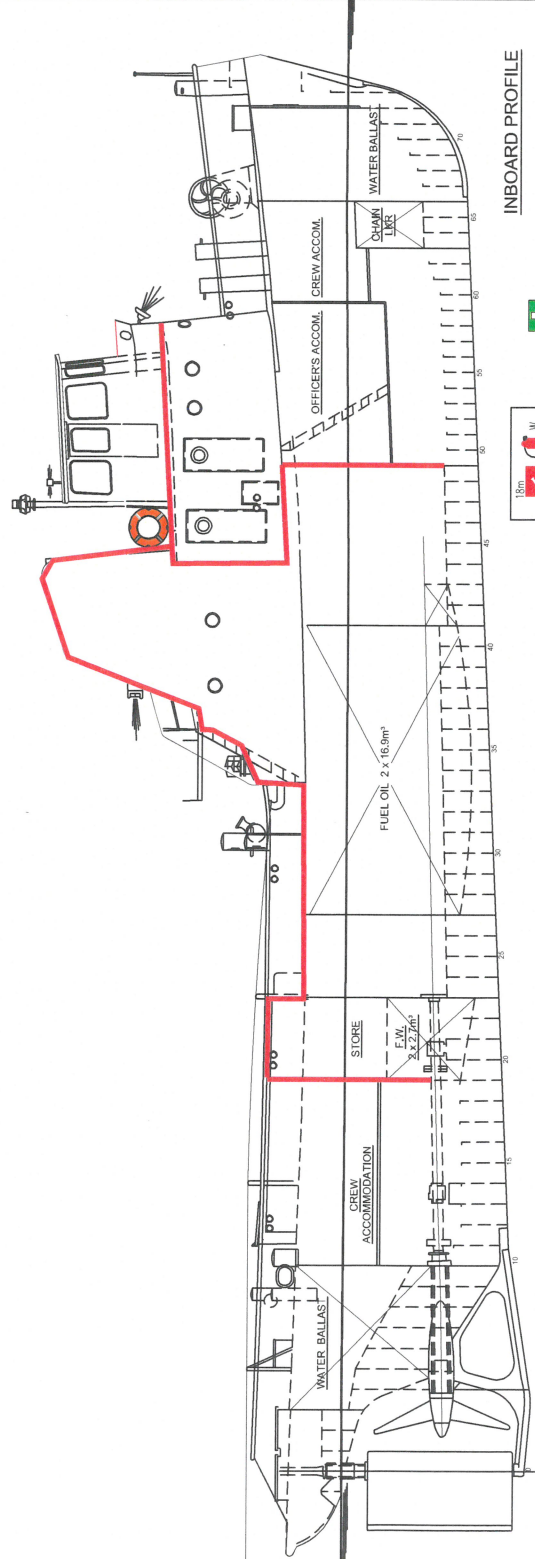
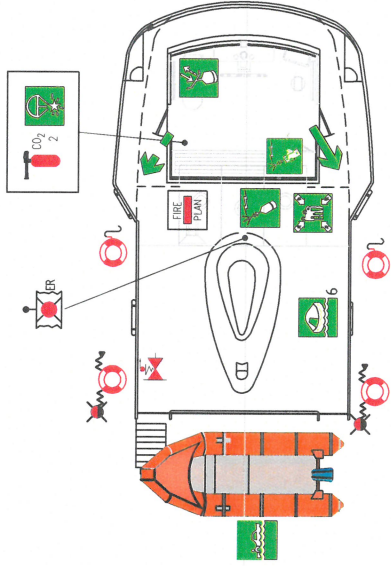
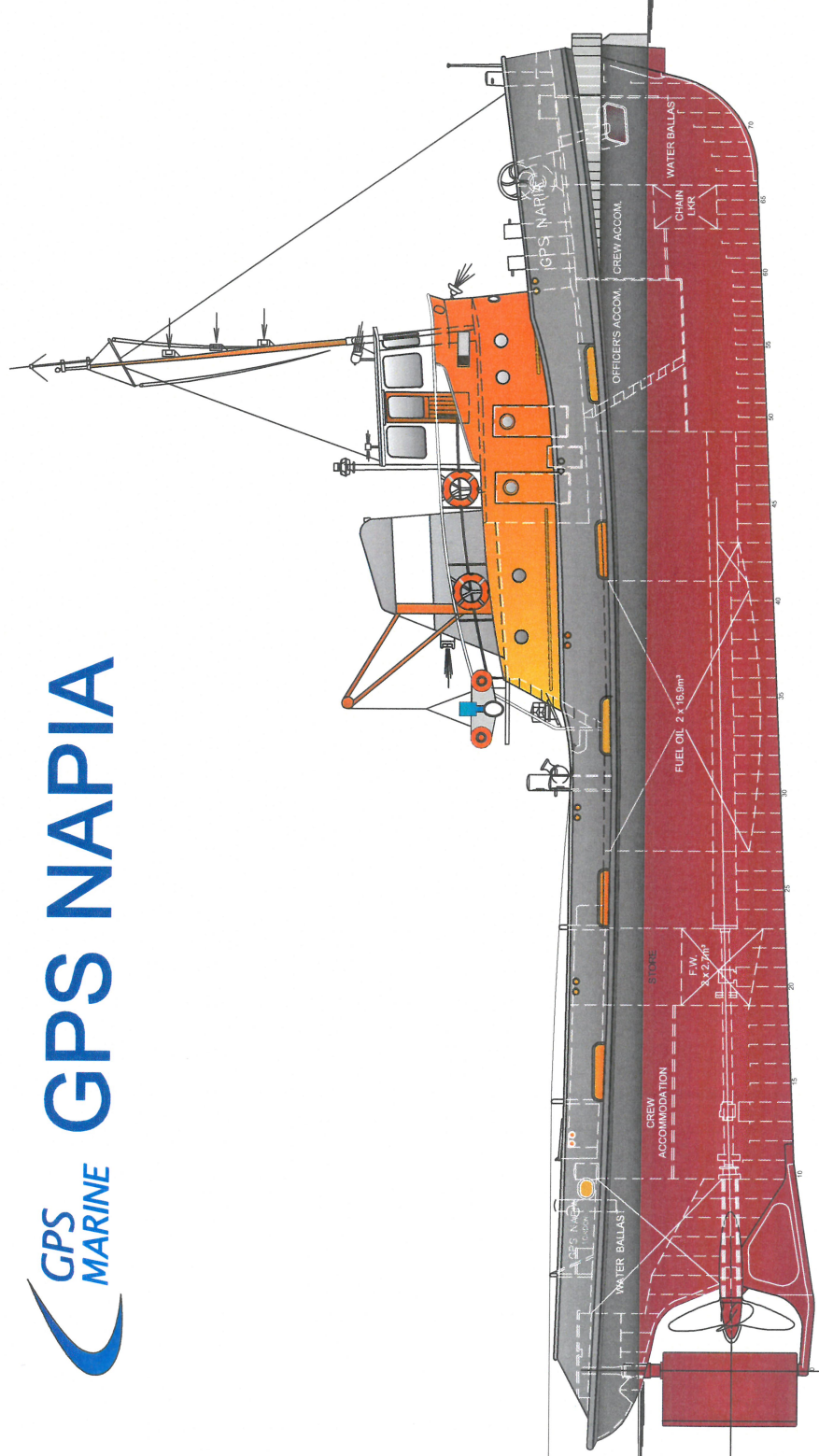


PRINCIPAL PARTICULARS

IMO Number 8730625
 LENGTH OVERALL 28.85 m
 LENGTH L.L. 27.00 m
 BREADTH (moulded) 6.90 m
 DEPTH (moulded) 3.50 m
 DRAFT (average) 2.80 m
 DRAFT (stern) 3.65 m
 MAIN ENGINE POWER 900 HP



Safety Plan

Symbol	Ref.	Description	Lower Deck	Main Deck	Bridge Deck
—	A	CLASS DIVISION	-	-	-
—	A	CLASS HINGED FIRE DOOR	-	-	-
—		PRIMARY MEANS OF ESCAPE	-	-	-
—		SECONDARY MEANS OF ESCAPE	-	-	-
—		LIFEBUOY WITH LIGHT AND SMOKE	-	2	2
—		LIFEBUOY WITH LINE	-	77	-
—		FIRST AID KIT	-	-	1
—		ROCKET PARACHUTE FLARES	-	-	1
—		RESCUE BOAT	-	-	1
—		LIFE RAFT - 6 PERSONS - SOLAS A	-	-	1
—		LIFEJACKET	6	-	-
—		LARGE LIFEJACKET	-	-	-
—		MUSTER AREA	-	-	1
—		EPRB	-	-	1
—		SEARCH AND RESCUE TRANSPONDER	-	-	1
—		PORTABLE GROSS RADIO	-	-	1
—		IMMERSION SUIT	6	-	-
—		FIRE & SAFETY PLAN (IN W.T.CONTAINER)	2	2	1
—		FIRE ALARM PANEL	-	1	-
—		FIRE/GENERAL SERVICE PUMP	1	-	-
—		BILGE PUMP	1	-	-
—		FIRE MAIN WITH FIRE VALVE	-	3	-
—		EMERGENCY BATTERY	1	-	-
—		FIRE BLANKET	-	1	-
—		AFFF FOAM FIRE EXTINGUISHER - 9 litres	1	-	-
—		AFFF FOAM FIRE EXTINGUISHER - 6 litres	2	1	-
—		CO ₂ FIRE EXTINGUISHER - 5 Kg	3	-	-
—		CO ₂ FIRE EXTINGUISHER - 2 Kg	2	1	1
—		WATER FIRE EXTINGUISHER - 6 litres	-	1	-
—		FIRE MAIN, HOSE BOX WITH NOZZLE	-	2	-
—		SMOKE DETECTORS	Yes	-	-
—		HEAT DETECTORS	-	ER	-
—		ENGINE ROOM VENT. SHUT DOWN (FIRE FLAPS)	-	4	1
—		REMOTE CONTROL FOR FUEL OIL VALVES	-	-	1
—		FIREMAN'S AXE	-	77	-
—		FIRE BELL ALARM	1	1	-

DOWLAND
 naval architects
 TEL: +44(0)207-100-2140
 FAX: +44(0)207-100-2140
 EMAIL: info.07@dowland.com

GPS NAPIA

FIRE & SAFETY PLAN

DRAWING NO.	C198 - 1800	DATE	FEBRUARY 2014
PROJECT NO.	C198	DRAWN BY	RMD
CAD REF. NO.		CHECKED BY	GF
SCALE	NTS	APPROVED BY	PV
ISSUE	0	© DWA 2014	NO. OF SHEETS 1 SHEET NO. 1